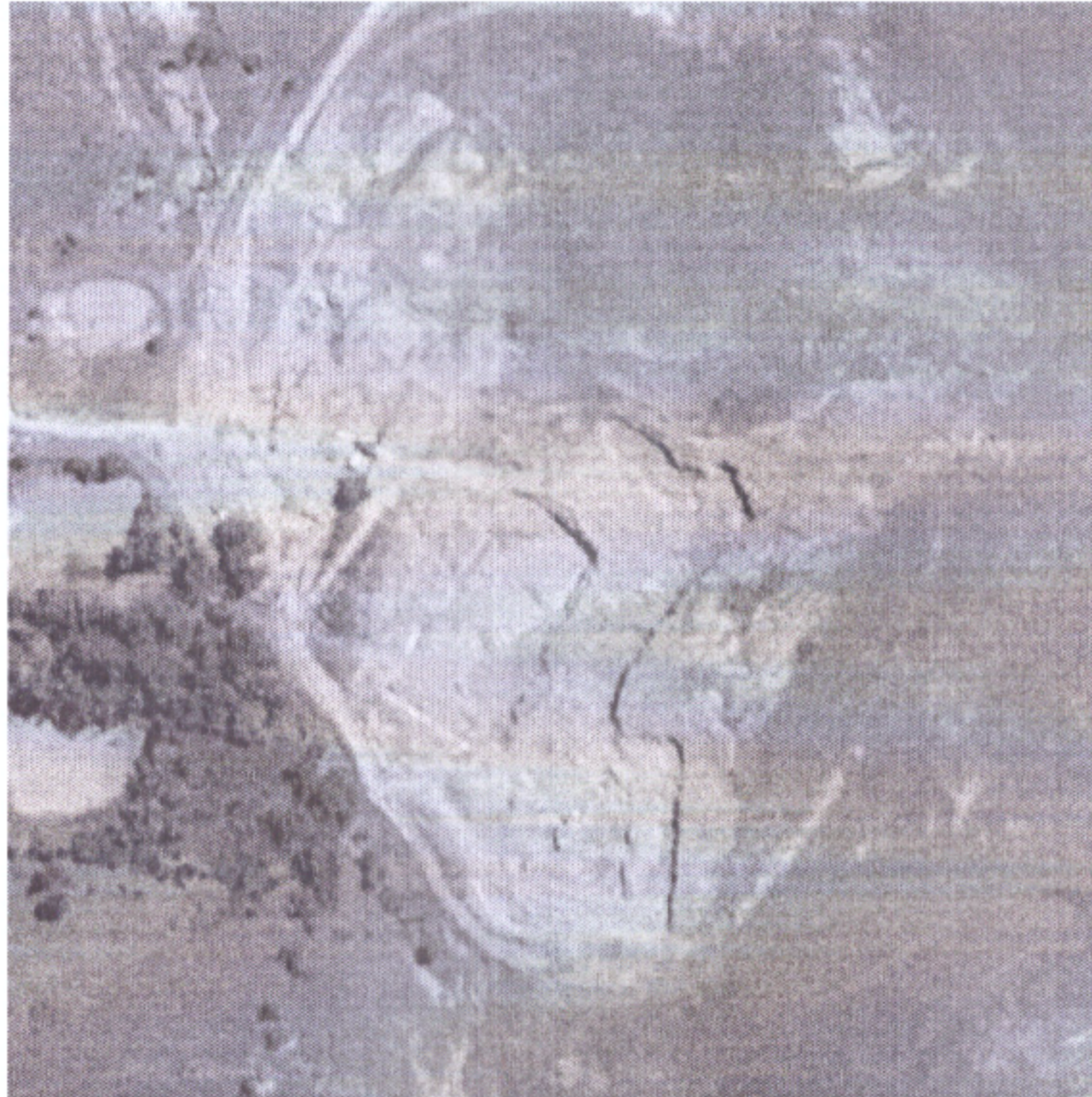


1. Title Page

# PORTERSHOEK QUARRY

## CODE OF PRACTICE TO COMBAT ROCK FALL AND SLOPE INSTABILITY RELATED ACCIDENTS IN SURFACE MINES

THIS CODE OF PRACTICE HAS BEEN DRAFTED IN COMPLIANCE TO THE DME 7/4/118-AB4 ISSUED BY THE  
CHIEF INSPECTOR OF MINES.



**COP Ref. No: PORTERSHOEK QUARRY/Slope Instability 01/2025**

Originator	Competent Person DP Venter.	Rock Engineering Consultant.	Mine Manager, Health and Safety Representative
		Distribution	
Revision No	04		
Effective Date	17 September 2013	Revision Date 14 April 2025	N/A
Next Revision Date	14 April 2027	DMR Mine Code 3505	

Authorized: Mine Manager \_\_\_\_\_

Date 14/4/2025

Rock Engineering Consultant \_\_\_\_\_

Date 14 April 2025

## **2. Table of Contents**

1. Title page	1
2. Table of Contents	2
3. Status of this Code of Practice	3
4. Members of the Drafting Committee and members of the revision Committee	4
5. General Information	5
5.1 Locality	5
5.2 Geological setting	7
5.3 Mining Environment	13
5.4 Ground control districts	14
5.5 Mine rock fall and slope incident analysis	18
6. Terms, Definitions and Abbreviations	19
7. Risk management	22
7.1 Introduction to Risk Assessment Process	22
7.2 Risk Assessment Process	22
7.3 Baseline Risk Assessment	22
7.4 Risk Matrix	22
7.5 Risk Assessment Summary	24
8. Aspects to be addressed in this COP	25
8.1 Overall mine stability	25
8.2 Protection of mine accesses/roads	27
8.3 Mining operations	28
8.4 Rock breaking	30
8.5 Impact of mining operations on neighboring mines	31
8.6 Slope instability	32
8.7 Other aspects to be addressed	34
Part D Implementation of the Code of Practice	42
<b>IMPLEMENTATION</b>	
<b>IMPLEMENTATION PLAN</b>	42
<b>COMPLIANCE WITH THE COP</b>	43
<b>ACCESS TO THE COP AND RELATED DOCUMENTS</b>	45
<b>REFERENCES AND APPENDICES</b>	